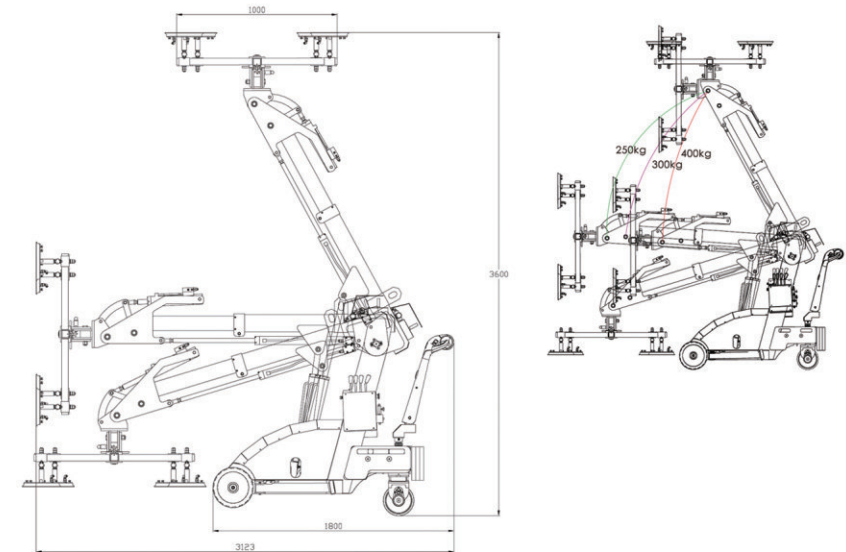


WS-GR designed as intelligent manipulator for glazing by DC battery powered, all functions controlled remotely by operator including moving, lifting, extending, tilting, side-moving, and vacuum switch, multiply application offered not only for panels installation on site, but for machine feeding or handling in workshop as well All movements could be achieved by hydraulic which offered steady working continuously. Special designed side moving unit offered fine positioning during glazing Side-shift function, helped the full-loaded machine easily come through narrow aisle and gates

Dimensional drawing



Application

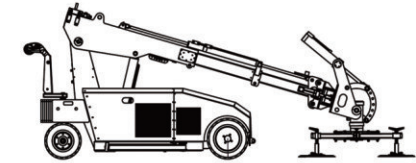
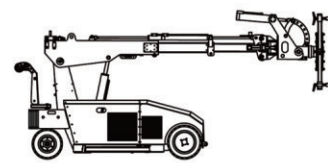
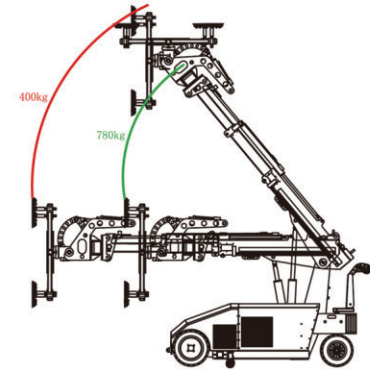
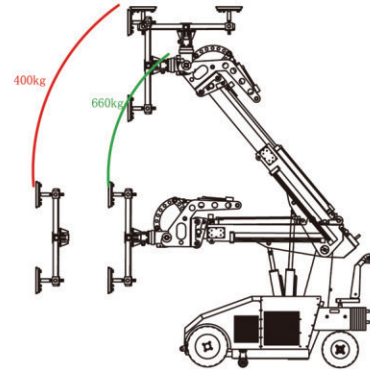


型号(model)	WSR-400
最大额定负载(Maximum rated load)	400kg at retracted, 250kg at full extended
工作电压(working power)	24V
驱动方式(driven By)	后轮驱动(Rear wheel driven)
驱动电机功率(Driving motor power)	1.2Kw
液压站功率(Hydraulic station Power)	1.2KW
液压泵工作压力及流量(Hydraulic pressure&flow)	16mpa, 0.75ML/R
升降方式(Elevating)	液压(Hydraulic cylinder)
伸缩方式(Extension)	液压(Hydraulic cylinder)
翻转方式(Tilting)	液压(Hydraulic cylinder)
旋转方式(Rotation)	手动,带角度定位销(Manual, spring lock for positioning)
侧扭方式(Side-turning)	手动,带角度定位销(Manual, spring lock for positioning)
侧移方式(Parallel-Moving)	液压(Hydraulic cylinder)
控制总成(Movement controller)	手动多路阀(Manual hydraulic valve assembly)
速度控制(Speed control)	力度控制(Sense of Strength)
轴距(Wheel base)	1230mm
真空泵(vacuum pump)	35L/m, 60W
真空系统(Vacuum circle)	双真空系统(Dual vacuum circle)
真空吸盘直径(Suction cups diameter)	300mm
真空吸盘个数(Suction cups number)	6

可根据客户要求定制 / Customized design option on request



Different from WSR400, we designed WSR600 and senior machines with Front-wheel driven, which gave better road holding and friction force while driving with loads. Moreover, these models improved the controller from manual valves to remote controller, intuitive interface helped operation easier to find required function, and much helpful to the speed control as well. An extension model of machine developed for higher lifting. Various options customized for special request as well.



Application



Model No	WSR-600	WSR-800/S	WSR-800/EX
Maximum loads	600kg/400kg	800kg/600kg	800kg/350kg
Batteries	2*DC 12V, 150Ah	2*DC 12V, 150Ah	2*DC 12V, 160Ah
Endurance time	20 hours	20 hours	20 hours
Charging time	8 hours	8 hours	8 hours
Charging power	AC 110-220V	AC 110-220V	AC 110-220V
Driving motor	AC, 2.2KW	AC, 2.2KW	AC, 2.2KW
Front wheels	2*[d]450*[w]205mm	2*[d]450*[w]205mm	4*[d]450*[w]205mm
Front wheels material	Foam filled solid typr	Foam filled solid typr	Foam filled solid typr
Rear wheels	2*dia.400mm, solid rubber	2*dia.400mm, solid rubber	2*dia.400mm, solid rubber
Maximum lifting height	3600mm	3600mm	4200mm
Hydraulic station	1.2KW	1.2KW	1.2KW
Lifting	By 1*cylinder	By 1*cylinder	By 2*cylinders
Extension cylinder	By 1*cylinder	By 1*cylinder	By 2*cylinders
Tilting cylinder	By 1*cylinder	By 1*cylinder	By 1*cylinder
Rotation hydraulic motor	1 piece, endless rotation	1 piece, endless rotation	1 piece, endless rotation
Side-turning	By cylinder, 22.5° on two sides	By cylinder, 22.5° on two sides	By cylinder, 22.5° on two sides
Parallel moving	By cylinder, 150mm	By cylinder, 150mm	By cylinder, 150mm
Vacuum pump	2 pump,DC24V, 60W,35L/M	2 pump,DC24V, 60W,35L/M	2 pump,DC24V, 60W,35L/M
Vacuum circle	Dual circles	Dual circles	Dual circles
Vacuum cups	6*Dia.300mm	6*Dia.400mm	6*Dia.400mm

可根据客户要求定制 / Customized design option on request